

Project 4: Construction Pro- ject Utrecht

De Wetering-Zuid

DELA cooperative, in partnership with Povse & Timmermans Architects & Engineers and J.A. van Gisbergen Construction Company, has realised a new crematory with funeral facilities on the Wetering-Zuid business park in Utrecht. For this project, Holonite contributed customised insulated base plinths which form a long, round frame that decorates the base of the amoeba-shaped building, and which simultaneously provides protection against moisture and dirt.

holonite®

Architecture 14

holonite®

Holonite B.V. • Ambachtsweg 9 • P.O. Box 39 • 4690 AA Tholen
Phone: +31 (0)166 601 300 • Fax: +31 (0)166 603 558 • info@holonite.nl • www.holonite.co.uk



About Holonite

As a producer and distributor of thresholds, window sills and wall covering elements made of composite stone, Holonite has acquired a leading position in the construction and window frame industry since 1969. Holonite provides the Dutch, Belgian, and German new-build and renovation market with standard and custom-made façade and finishing elements. Holonite works with everyone from architects to contractors and cooperative housing associations to private individuals on an indirect level. Holonite is targeting the window frame industry with its range of low-relief thresholds.



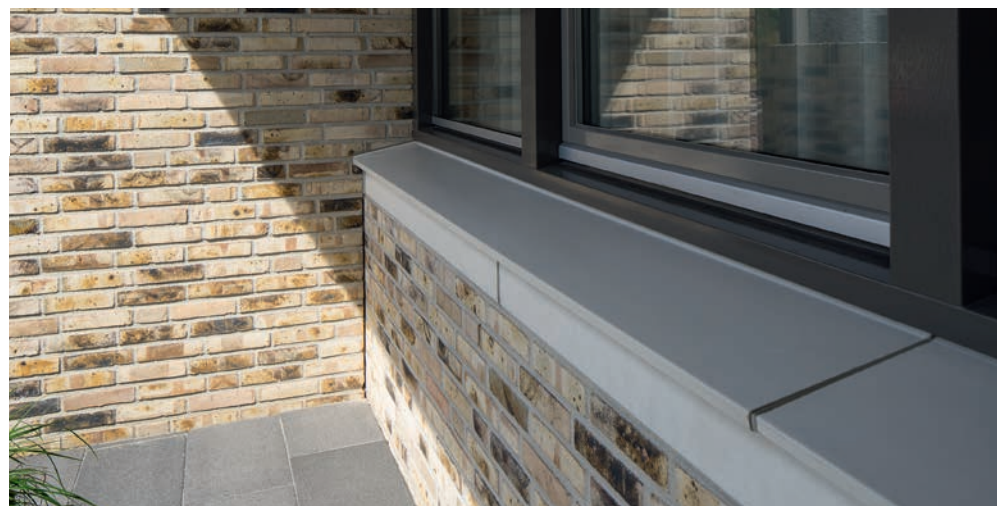
Under the name "Lieverley", and in collaboration with the architectural firm FORM, ERA Contour realised 30 "beterBASIS-huis" homes on the Wapserveenstraat in the neighbourhood of Morgenstond-West. For this Lieverley project, Holonite produced white frames, wall covers and brackets. These white elements provide a nice contrast within the multi-coloured brickwork.



Project 1: Construction Project Tilburg

48 houses in Koolhoven Buiten

The Dongehof project is located in Koolhoven Buiten, on the west side of the river Donge. In Dongehof, Triborgh Regional development, in cooperation with Hilberink Bosch Architects, developed and constructed 12 semi-detached homes, 28 terraced and corner homes, and 8 bungalows. The homes are bright and sunny and the façades have a playful appearance due to the variations in the applied masonry and the use of three kinds of brick. In this particular project, Holonite contributed with Premax thresholds and standard window sills. These elements and the continuous interplay of lines in the façade have given the whole construction a tailor-made look.



Project 3: Construction Project Den Haag

Construction Project of 30 homes on the Wapserveenstraat



Project 2: Construction Project Teteringen

Construction Project Bouverijen built and completed in phases



The construction project Bouverijen in Teteringen was built and completed in phases. In total, about 640 homes and a contractor school were realised. The Nederlandse Bouw Unie was the contracting authority of this project and the architect was Mulleners + Mulleners from Amsterdam. Holonite contributed to this project with dark grey and white window sills, frames and wall covers. The chimneys were also provided with custom-made covers. These façade elements enhance the white and orange masonry in a subtle way.