

Project 4: Slotjes Oost and Oosterheide in Oosterhout

Large-scale renovation using Premax® + thresholds

A total of 363 flat-roof residences have been renovated in the districts of Slotjes-Oost and Oosterheide in Oosterhout. This large-scale renovation project was launched a year ago in partnership with Ballast Nedam Construction and Driessens Window Frames on behalf of Thuisvester housing association. For this project, Holonite supplied Premax® + low-relief thresholds. These thresholds improve insulation, resulting in a more energy-efficient residence.

holonite®

Architecture 13

holonite®

Holonite B.V. • Ambachtsweg 9 • P.O. Box 39 • 4690 AA Tholen
Phone: +31(0)166 601 300 • Fax +31(0)166 603 558 • info@holonite.nl • www.holonite.co.uk



About Holonite



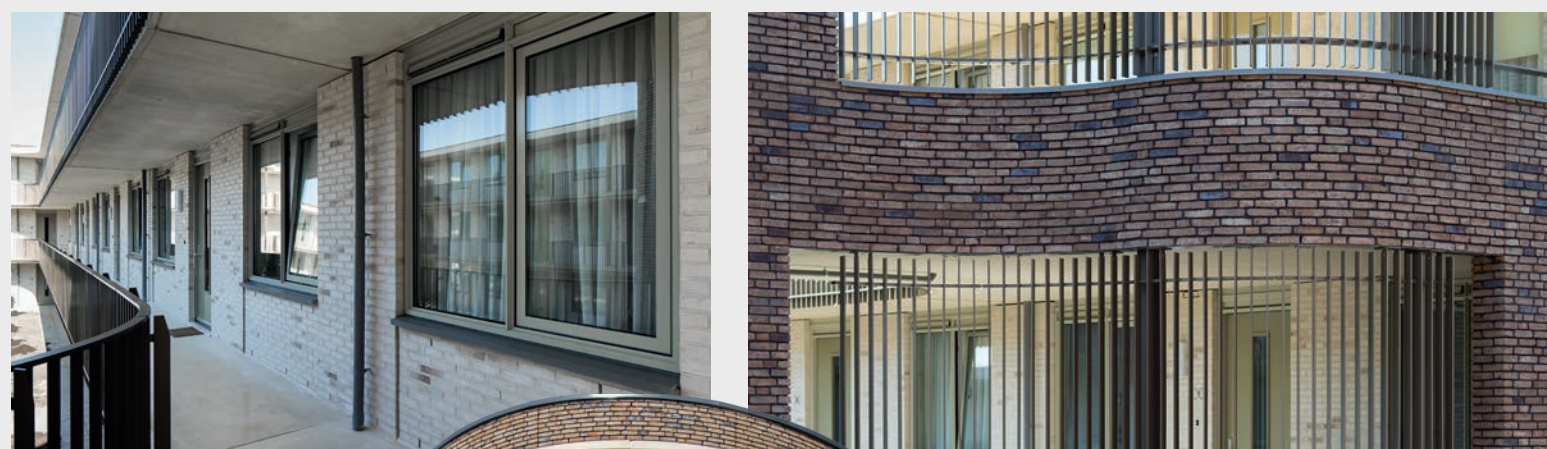
As a producer and distributor of thresholds, window sills and wall covering elements made of composite stone, Holonite has acquired a leading position in the construction and window frame industry since 1969. Holonite provides de Dutch, Belgium and German new-build and renovation market with standard and custom-made façade and finishing elements. Holonite works with everyone from architects to contractors and cooperative housing associations to private individuals on an indirect level. Holonite is targeting the window frame industry with its range of low-relief thresholds.

Project 1: Vermeer- and Ruisdaelstreet in Alphen aan den Rijn

Renovation of 54 residences



Blanksma Construction company has renovated 54 residences on behalf of the housing association wonenCentraal. Holonite contributed to this project through the provision of custom-made dark-grey frames and landing elements. The windows frames together with the Holonite frames around them have a 3D effect and lend the colourful, vibrant façade a subtle finish. The custom-made decorative elements above the doors make for an impressive entrance, which prioritises the amount of incoming light.



Construction of 60 apartments at Uilennest in Hattem

Custom-made wall covering elements and window sills



On behalf of Triada (housing association), these energy-efficient apartments, which are intended to meet the changing needs of the residents at various stages of their lives, were built by the construction firm Salverda and designed by the architectural agency Groosman Partners, which is based in Rotterdam. For this project, Holonite supplied wheelchair-accessible thresholds and custom-made curved wall covering elements and window sills.



Project 2: Construction of unique town hall in Doorn

Insulated base plinths and customised window sills with moulded upstands



The new administrative building for the municipal authorities of Utrechtse Heuvelrug consists of three separate buildings and is located in Doorn. It was designed by Inbo Rijswijk and was built by Ballast Nedam Construction Central Netherlands. For this project, Holonite provided insulated base plinths and window sills. The insulated base plinths both accentuate the majestic appearance of the dusky pink façades and protect and insulate the delicate base of the building.